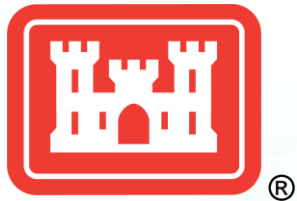


# *Fargo-Moorhead Metropolitan Flood Risk Management Project*

*Flood Diversion Board of Authority meeting*

*August 8, 2013*



US Army Corps of Engineers  
**BUILDING STRONG**



# Presentation Outline

- Monthly Update
- Maple River Physical Modeling
- NEPA Path Forward
- Project Path Forward

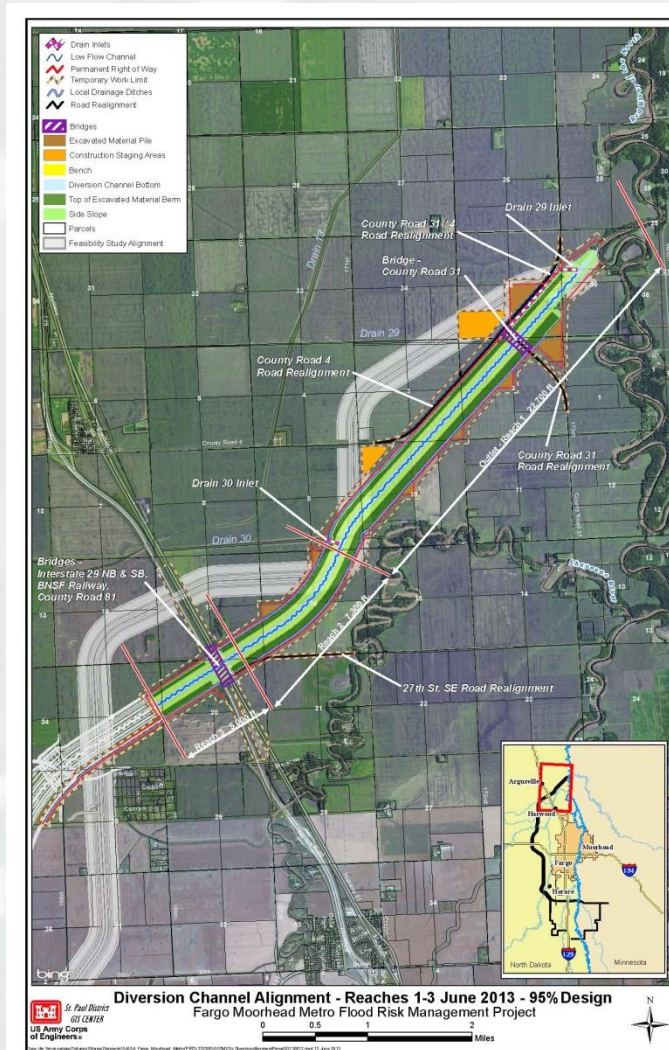


Fargo-Moorhead - 2009



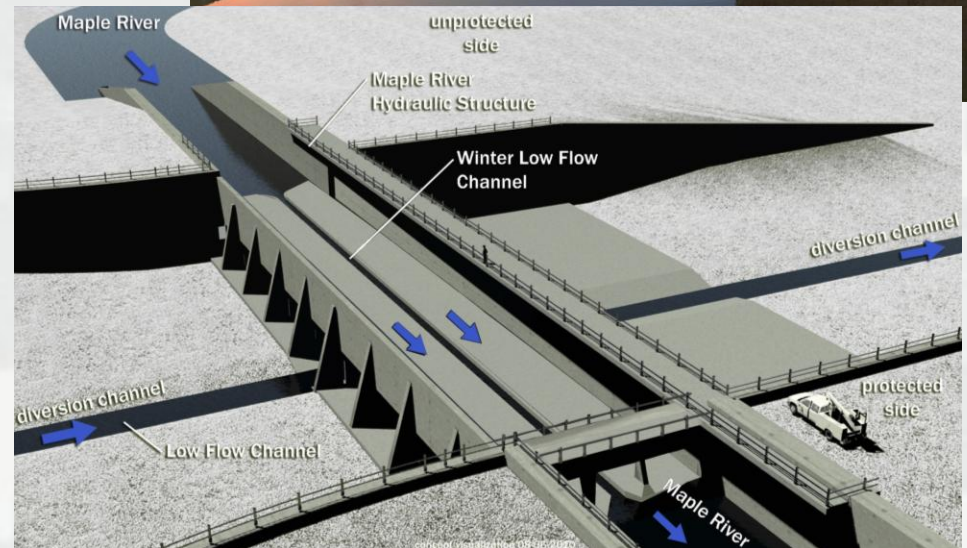
# Corps Monthly Update

- Design work continues on Outlet to Reach 4.
- Supplemental Draft Environmental Assessment (EA): Preparing responses to public comments and document modifications
- Continue to support MnEIS process
- Preparing to commence Maple River Phase II Physical Modeling



# Maple River Physical Modeling – Phase 2

- Phase 1
  - ▶ Included construction of the physical model
- Phase 2 Purpose
  - ▶ Use the physical model to develop and refine hydraulic design criteria for the Maple River Aqueduct feature
  - ▶ Test the hydraulic characteristics of the aqueduct and spillway
  - ▶ Simulate ice conditions
  - ▶ Thermal study
  - ▶ 15 month duration
- Site Visit Opportunities



# National Environmental Policy Act (NEPA) - Path Forward

- November 2012 – May 2013: Corps develops Supplemental Environmental Assessment (EA) document
- June 14, 2013: EA document released, 30-day comment period begins
- June 25, 2013: EA public meeting
- July 15, 2013: EA public review period ends
- August 2013: NEPA process complete and decision is finalized



# Project Path Forward

(Next 12+ months)

---

- Corps finalizes/signs EA (August)
- Corps & sponsors finalize/sign Design Agreement amendment
- Await Federal Authorization
- Corps provides input into MN EIS process (ongoing)
- After EA approval:
  - ▶ Corps/Diversion Authority begin Oxbow/Hickson/Bakke ring levee design
  - ▶ Diversion Authority continues with In-Town Levees design



Next:

Status of Authority Work Directives/  
Task Orders

