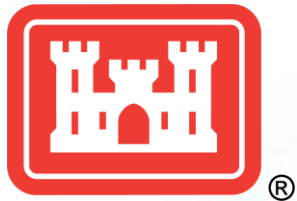


# ***Fargo-Moorhead Metropolitan Flood Risk Management Project***

*Flood Diversion Board of Authority meeting*

*October 10, 2013*



US Army Corps of Engineers  
**BUILDING STRONG**®



# Presentation Outline

---

- Monthly Update
- Environmental Assessment
- Oxbow/Hickson/Bakke Levee
- Government Shutdown
- Project Path Forward

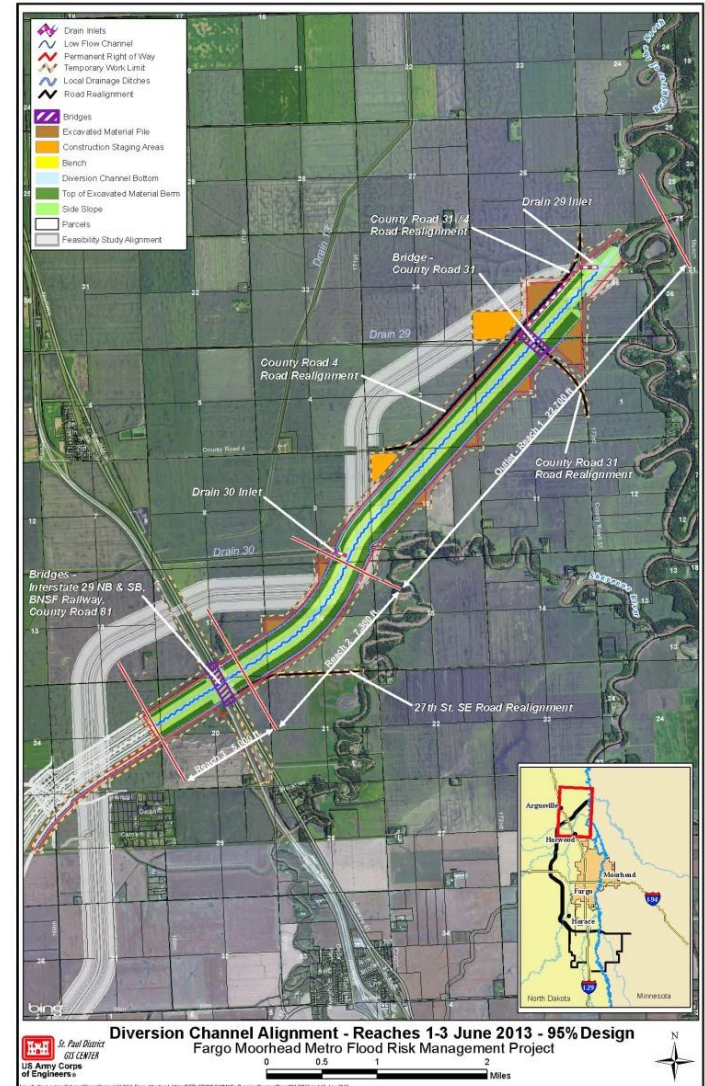


Fargo-Moorhead - 2009



# Corps Monthly Update

- Design work continues on Outlet to Reach 4, with Outlet/Reach 1 and Reach 2 nearing technical completion.
- Supplemental Environmental Assessment (EA) was signed
- Continue to support MnEIS process
- Maple River Aqueduct Physical Modeling is moving forward
- Oxbow/Hickson/Bakke Levee design





# Supplemental Environmental Assessment

- Complete
- September 19, 2013 - District Engineer signed
  - FONSI (Finding of No Significant Impact)
  - Section 404(b)(1) Supplement 1 (compliance with Clean Water Act for discharge of fill material)
- Responded to comments from approximately 33 entities and members of the public



DEPARTMENT OF THE ARMY  
ST. PAUL DISTRICT, CORPS OF ENGINEERS  
180 FIFTH STREET EAST, SUITE 700  
ST. PAUL, MN 55101-1678

Regional Planning and Environment Division North

## FINDING OF NO SIGNIFICANT IMPACT

In accordance with the National Environmental Policy Act of 1969, Corps of Engineers, the St. Paul District, has assessed the environmental impacts for the following:


### DESIGN MODIFICATIONS TO THE FARGO MOORHEAD METROPOLITAN AREA FLOOD RISK MANAGEMENT PROJECT

The U.S. Army Corps of Engineers is proposing modifications to the Fargo-Moorhead Metropolitan Area Flood Risk Management Project, which was previously the subject of a Final Feasibility Report and Environmental Impact Statement. A Record of Decision was signed on April 3, 2012. The proposed modifications include shifts in the alignment of the diversion channel to include the elimination of Storage Area 1 adjacent to the inlet of the diversion channel, the addition of gates on the diversion inlet structure, and the elimination of the structure on Wolverton Creek; modification of the diversion channel cross section which includes the addition of permanent and temporary easements to the footprint area; construction of levees/floodwalls in downtown Fargo; and the construction of a ring levee around the towns of Oxbow, Hickson, and Bakke, North Dakota. The Project is located in Cass County, North Dakota, and Clay County, Minnesota, with some impacts in Richland County, North Dakota, and Wilkin County, Minnesota.

This Finding of No Significant Impact is based on the following factors, as discussed in the attached Supplemental Environmental Assessment: the proposed modifications would produce a minor short-term adverse effect on noise levels and aesthetic values. The proposed modifications would have a minor long-term adverse effect on, prime and unique farmland, aquatic habitat, upland habitat/riparian habitat, and wetlands. The proposed modifications would have a minor long-term positive effect on fish passage, business and home relocations, flooding effects, tax revenue, and geomorphology. Impacts to cultural resources have been or will be identified and will be mitigated for. The modifications would not result in impacts appreciably different in type or magnitude from what was described in the Final Feasibility Report and Environmental Impact Statement.

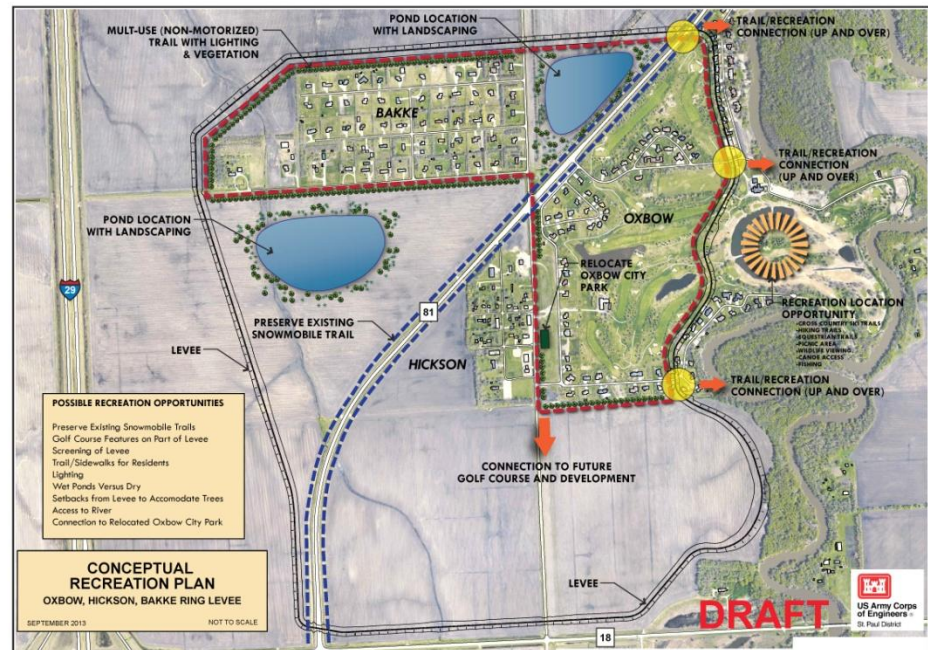
For the reasons stated above, the proposed modifications do not constitute a major federal action significantly affecting the quality of the environment. Therefore, a supplemental environmental impact statement for the proposed modifications will not be prepared.

19 SEP 13  
Date

  
Daniel C. Koprowski  
Colonel, Corps of Engineers  
District Engineer

# Oxbow/Hickson/Bakke Levee

- Soil Borings continue
- Phase 1 cultural and HTRW investigations starting
- Holding weekly teleconferences.
- Conceptual recreation plan in development



Conceptual Recreation Plan



# Cemetery Study

---

- With EA complete:
  - ❑ Updating FEIS information on cemeteries
  - ❑ Determining cemeteries in upstream area
  - ❑ Conduct site visits
  - ❑ Interview representatives for each site
  - ❑ Gathering info for mitigation plan



Draft Map – Staging Area



# Government Shutdown

---

- What does this mean for the FMM project:
  - ▶ With funds remaining from federal fiscal year 2013 or sponsor provided funds, Corps team able to continue to work on the project.
    - Design work on the Oxbow/Hickson/Bakee levee will continue
    - Design work on Corps-led components will continue
  - ▶ Support from other Corps employees may be missing until the shutdown is resolved.
  - ▶ Support/coordination with other federal agencies may be missing until the shutdown is resolved.
  - ▶ Travel is restricted



# Project Path Forward

---

- Design Agreement Amendment No 1
  - ▶ Once approved by Corps' Headquarters, the amendment can be executed.
- Await Federal Authorization for the project
- Continue to review design products
- Corps provides input into MN EIS process (ongoing)
- Continue Oxbow/Hickson/Bakke levee coordination and design.





# Next on Today's Agenda

---

- 5. Administrative/Legal Report
- 6. Technical Report
  - ▶ a. [Design Contracts/Tasks Orders](#)
  - ▶ b. Red River Basin Commission Report

