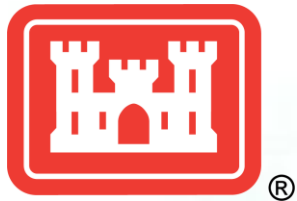


# *Fargo-Moorhead Metropolitan Flood Risk Management Project*

*Flood Diversion Board of Authority meeting*

*August 14, 2014*

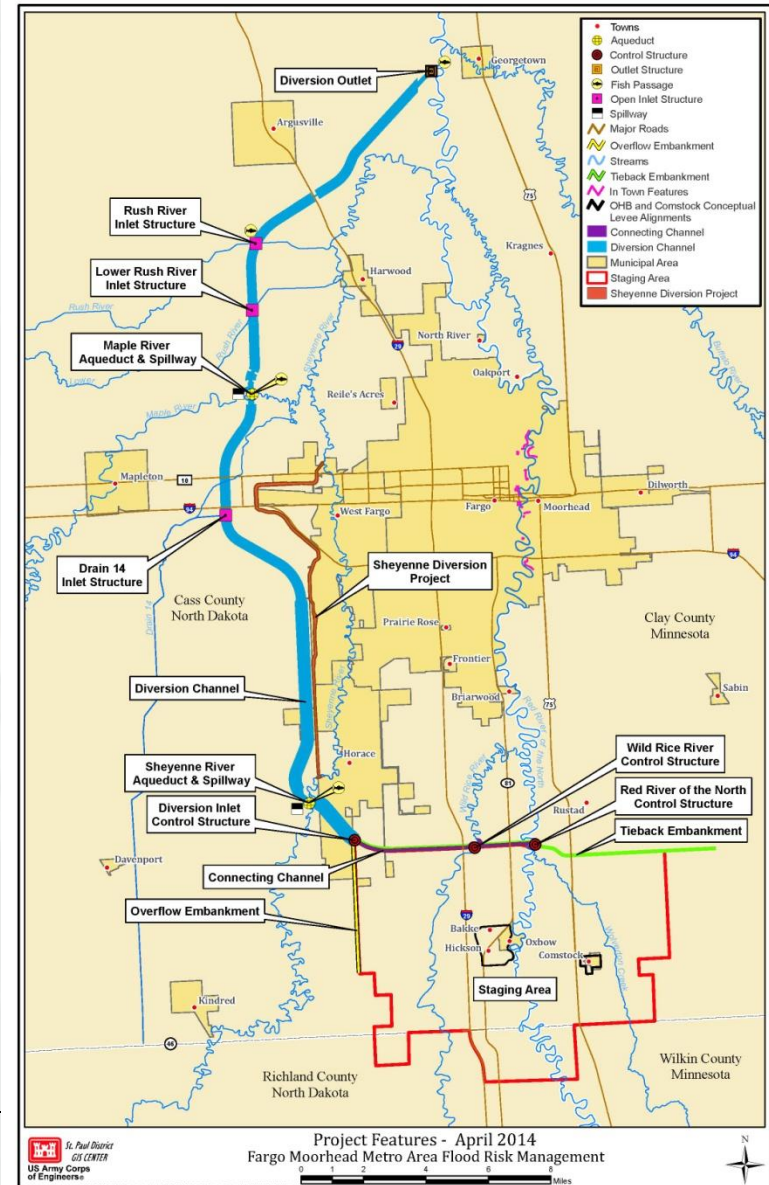


US Army Corps of Engineers  
**BUILDING STRONG**®



# Corps Monthly Update

- Maple River Aqueduct Physical Modeling continues
- Oxbow/Hickson/Bakke Levee design continues
- Design continues on Wild Rice Dam fish passage structure removal
- Assisting with In-Town Levee design
- Continuing design of Reach 5
- Cemetery Study
- Continued coordination with MnDNR for their EIS process



# Maple River Aqueduct

- Work continues on the model
- Open House was held on July 24, 2014



# Maple River Aqueduct

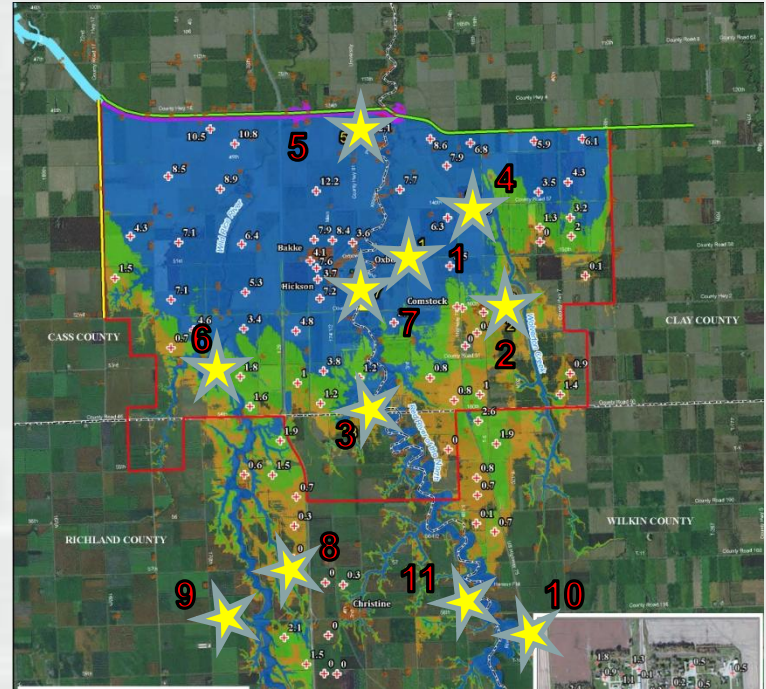
---

- 180 people attended open house
- Groups represented:
  - ✓ Society of American Military Engineers
  - ✓ NRCS
  - ✓ MnDNR
  - ✓ NDSWC
  - ✓ ND Game and Fish
  - ✓ Floodplain management organizations
  - ✓ Public
  - ✓ Sponsors
  - ✓ Elected Officials
  - ✓ Media
  - ✓ Corps St. Paul and regional team members
  
- Video being produced to post for those unable to attend



# Cemetery Study

- Impacted Sites - Staging Area
  - 1 - Clara (Clay County)
  - 2 - Comstock (Clay County)
  - 3 - Hemnes (Richland County)
  - 4 - Hoff (Clay County)
  - 5 - Lower Wild Rice and Red River (LWRRR) (Cass Co.)
  - 6 - North Pleasant (Cass Co.)
  - 7 - Roen Family (Clay Co.)
- Impacted Sites – Upstream
  - 8 - South Pleasant (Lium)
  - 9 - South Pleasant Church
  - 10 - Wolverton-Salem Lutheran
  - 11 - Eagle Valley



# Cemetery Study

---

- Visited 10 of 11 impacted sites on July 21-22
  - ▶ Still need to meet with Lium (South Pleasant) Cemetery
- Met with individual POCs
- Others also in attendance
  - ▶ Concerned families/citizens
  - ▶ Church Board members
  - ▶ Caretakers and volunteers
  - ▶ MnDak Upstream Coalition
  - ▶ Upstream Cemetery Authority
  - ▶ Diversion Authority representatives
  - ▶ Others
  
- Will use information gathered to determine a mitigation plan for each site
- Additional site visits may be needed



# Project Path Forward

---

- Continue to support MN EIS process
- Continue to develop and review design products
- Continue to develop cemetery mitigation plans



# Next

- Administrative/Legal
- Technical: Contracts and Task Orders

